



The Forest Management Committee paused for a breather on a balmy March 8.

## UPCOMING EVENTS

*Note: Not all events are listed on this and other DFCSA calendars. If you are planning an event and wish to check the availability of a specific facility on a certain date, please call Karen Pype (248-926-6219).*

### Annual Membership Meeting

The 2015 Annual Meeting is scheduled for April 26 in the Clubroom. Registration begins at 11:00 a.m. and the meeting starts at noon. It is very important that members attend the meeting. Many issues need to be discussed and voted on. Please come to the meeting and be a part of the decision making of our association. The sauna will be open after the meeting.

### So Could You Really Live in Finland?

*The Week* magazine for March 20 reports that a millionaire motorist in Finland recently had to pay nearly \$60,000 in fines—for driving 64 mph in a 50 mph zone. Why? Because traffic fines are scaled to income. The driver's opinion: "Finland is impossible to live in for certain kinds of people." Could *you* live in Finland?

## CALENDAR

### April

- 2—Future Planning meeting, 7:30 p.m., Boardroom
- 12—Forest Management, 10:00 a.m., pole barn
- 15—Sisu Sisters meeting, 6:30 p.m., Clubroom
- 19—Board meeting, 10:00 a.m., visitors at noon
- 26—**Annual meeting:** registration, 11:00 a.m.; meeting starts at noon

### May

- 3—*Talkoo*, 10:00 a.m.
- 8—Sisu Sisters meeting, 6:30 p.m., Clubroom
- 17—Board meeting, 10:00 a.m., visitors at noon
- 25—Memorial Day flag raising, 9:30 a.m., Leppi's Landing

### Other

- June 14—Fishing Derby
- 20—Juhannus
- August 14–16: Finn Fest

## New St. Urho's King and Queen



Congratulations to 2015's St. Urho's king Rob Johnson and queen Leah Honka Paukovits. *Photo by Tammie King*

### More Lore: The Great Migration

The March *Finnish American Reporter* estimates that “during the peak winter months the Finnish population of [central Florida] swells to 10,000 plus—a population which includes *lumilinnut* (snow birds) from Finland, Canada and the U.S.” Lantana and Lake Worth together make up one of the key areas in which Finns overwinter. Given that the combined 2013 estimated population of these two cities was some 47,000, it would seem that the 10,000 visiting Finns might be the dominant ethnic group during their time there. But this influence is only a shadow of what it used to be. A 2005 newspaper report said that Lake Worth's Finnish population in 2000 was still the largest in the state but had dropped 24 percent since 1990. A few decades earlier, Lake Worth was being cited as having the largest Finnish population outside Scandinavia. The famous Finnish American accordionist Viola Turpeinen retired with her husband to Lake Worth in 1952 after playing many venues in Florida, New York, and the Midwest, including Finn Camp.

## Camps for Sale



### Camp 103, West Side

Charming cottage-style cabin with high-end materials: real stucco exterior, terra-cotta tile, Old World textured walls and ceiling. Under-cabin storage conceals yard tools, larger patio items. Fully decorated and furnished: ceiling fan, vinyl windows, bedside sconces, trundle bed (sleeps 4), all patio furnishings, gas grill, mini-fridge, micro-wave, electric fireplace, bistro table, 5 storage dressers for dishes, cooking utensils, linens, bedding—everything you need—just pack your clothes and come out for the weekend. \$8,000 cash, \$10,000 rent-to-own or \$2,000 down with \$2,000 per for 4 years. For a tour or more information, call Crystal: 248-421-3975.

### Camp 128, West Side

Good condition. Hide-a-bed, working refrigerator, built-in bunk beds with foam mattresses. Family owned since 1925! Asking \$2,500. Contact Pam Hoffmann (owner): 803-407-0341.

Free Turkey Fryer  
Contact Dan Linick:  
734-218-1056



## Spotlight: Members Ron and Elayne Nordin



Ron and Elayne Nordin rejoined Finn Camp in 1983, after an absence of several years while raising their family of six children and eight grandchildren. They have been married for 50 years and live in Sterling Heights. Ron and Elayne were both born in Detroit. Ron spent his mid-1950s summers at Finn Camp in camp 97, which his parents bought from Rey Mustonen in 1949. Three of Ron and Elayne's children—Israel, Jenny and Chris—are current members and own camps. Ron and Elayne have three rescue dogs: Bitzie, Bella and Sprout. Sprout was rescued in Puerto Rico several months ago. They have fostered many rescued dogs over the years.

Ron served in the U.S. Army and was in the wholesale steel business for 37 years as owner of Nordin Industries for many years. He retired in 2002. After retirement Ron became a certified watchmaker and still continues to study the guitar. Both Ron and Elayne are avid collectors of a wide range of antiques and have had two antique shops over the years.

Elayne attended the University of Michigan and has been involved in preventive medicine through nutrition and supplements for some 40 years. In 1980 she became involved in homeopathy and is an educator and consultant in this field. She is also the director of the Foundation for Holistic Research and the author of *Nature First*, involving preventive medicine through the kitchen rather than the drugstore.

Ron and Elayne have worked on the Finn Camp Bar Committee, helped with Winterfest, chaired the children's weekend and for the last several years have enjoyed working kitchen duty during Juhannus and Finn Fest.

### Trash Rules.

Dumpsters are for member use only! Do not put in large or long items that may wedge or jam the dumpster when it is being tipped into the truck. No major dumping on festival weekends. No overfilling.

### Lakes Area Bait Shop

Live Bait. Reloading.

Supplies for Fishing,  
including Bowfishing.

Hunting, Camping, Archery

2600 Benstein Rd.,  
Wolverine Lake  
(south of Glengary Rd.)

Ph.: 248-624-3333

LakesAreaBaitShop@Yahoo.com

Suppliers to the Finn Camp  
Fishing Derby

### Foote Tractor

Michigan's Southeastern  
Tractor Headquarters

*Serving the Novi, Howell, and  
Metro Detroit areas for 40 Years!*

888-783-2309

foote-tractor.com

### Sherry's Sweet and Savory Pasties

Beef: \$5 each; Pulla: \$4 per loaf  
Call Sherry Kurin to place order:  
248-535-6022

### Need a Seamstress?

Call Cindi Maddick for all your  
alterations, custom work and  
mending at

248-303-7337

### Cords of Firewood for Sale

\$50 for members, \$60  
nonmembers.  
Delivery extra.

Contact Mike Honka,  
ph. 248-860-5109

*No furniture, appliances, propane tanks, wood, construction materials or other large items are to be left in, by or around the dumpster. Large items can be placed at roadside near the tractor garage on Tuesdays for Wednesday pickup.*

Finn Camp or member camp construction materials can be placed in the dumpster by the pole barn.

On Saturday, April 11, from 10:00 a.m. to 1:00 p.m., the Wixom Department of Public Works (2041 Charms Rd. near Wixom Rd.; 248-208-2270) will be open to drop off household hazardous waste items.

## **BOARD NOTES AND REMINDERS**

Please help your board welcome new members Gina Parisi and Charles Gariepy and his wife, Heather.

The Friday night grill will reopen at the end of April. This will be Jim Santti and Dick Pype's last year with the grill. We are looking for someone to step up and continue this great Friday night tradition that so many have come to enjoy. Please contact Jim or Dick if interested.

The board is accepting applications for the Sun Lake beach manager for the 2015 season. Letters of application will be accepted by mail or email. See the contact information below.

The board is accepting bids for the aluminum Finn Camp paddle boat that has been at Sun Lake. All bids due April 15. The boat must be removed from Finn Camp property.

Members with suggestions, comments or board-related business are asked to e-mail [board@finncamp.org](mailto:board@finncamp.org). Those looking to add to their work hours should email the Works Administrators at [work@finncamp.org](mailto:work@finncamp.org). General questions may be answered by visiting [www.finncamp.org](http://www.finncamp.org).

## **BOARD AND COMMITTEE MEETINGS**

### **Board of Directors**

Sunday, April 19, 10:00 a.m., visitors at noon

### **Forest Management Committee**

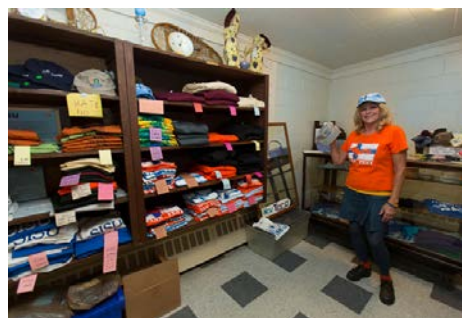
Sunday, April 12, 10:00 a.m., meet at pole barn

### **Future Planning Committee**

Thursday, April 2, 7:30 p.m., Boardroom

### **Sisu Sisters**

Wednesday, April 15, 6:30 p.m., Clubroom



Shop the Finn Camp Store, in the Clubroom, whatever the season! We have t-shirts, hats, hoodies, koozies, and Finnish CDs. For access to the store during off hours, call Patti Leppi, at 248-921-1432, or email her at [Store@finncamp.org](mailto:Store@finncamp.org).

### **Finn Camp Newsletter**

(ISSN 2154-5545) is published the first of each month by the Detroit Finnish Cooperative Summer Camp Association (D.F.C.S.C.A.), 2524 Loon Lake Rd., Wixom, MI 48393-1654. Contents copyright © 2015 D.F.C.S.C.A. All rights reserved. Reproduction of this publication in whole or in part, in any form, is forbidden without prior written permission.

#### **Board of Directors**

President: Dan Linick

Vice President: Patti Leppi

Treasurer: Dick Pype

Secretary: Amber Martin

Works Administrators: Larry Gooden, Kevin Homola, Jim Santti

**Editorial Staff:** Newsletter Committee Chairperson, copy editor, David R. Hall; Production editor and contributor, Brian Peltó; Designer, photographer and website manager, Erick Leskinen; Contributor, Belinda Arbogast.

**Subscriptions:** Printed newsletters by regular mail are \$15 per year. Subscriptions by email are free. To receive newsletters via email (the only version in color) go to [newsletter\\_editor@finncamp.org](mailto:newsletter_editor@finncamp.org) and write "Subscribe to Newsletters" in the subject field. **All material for newsletter articles is due by the 15<sup>th</sup> of the month.** Please visit the Finn Camp website at [www.finncamp.org](http://www.finncamp.org).