



# FINN CAMP NEWSLETTER

SEPTEMBER 2020



*New dock recently installed at Loon Lake.*

## Sauna Update

Beginning on Wednesday, September 9, the sauna will be open for MEMBERS ONLY. In addition, it is recommended that at any time a member is in the building he or she is to wear a mask. This includes inside the dressing areas and restrooms. Your cooperation is appreciated.

## Leppi Landing Clean Up

Approximately thirty campers came out on August 22 to get work hours by sprucing up Leppi's Landing on Loon Lake. The work bee was sponsored by the Sisus Sisters and the Board of Directors. Campers kept busy filling in low spots, mowing, deep cleaning the bathrooms, cutting firewood, moving boats, and pulling invasive weeds out of the pine trees. A big thanks to Tammie King, Mary Barie and Deb Swanson for organizing and feeding us a lovely lunch. Eight dump trucks of debris were removed reminding us that Teamwork makes the Dream work. Thanks to all for your participation. For any member looking for hours you may contact any works administrator below.

Please use their preferred method of contact:

Kevin Homola: text only 248- 342- 5691

Chris Nordin: email only [Chrisnordin@glassacademy.com](mailto:Chrisnordin@glassacademy.com)

Mike Niemasz: text or call 248-240-0480.

## CALENDAR

### September

- 2—Future Planning Committee, 7:00 p.m., boardroom
- 23—**Board Meeting**, 5:00 p.m., visitors at 5:00 p.m.

### October

- 7—Future Planning Committee, 7:00 p.m., boardroom
- 11—**Board Meeting**, 9:00 a.m., visitors at 11:00 a.m.
- 18—**Semiannual Membership Meeting**, 12:00 noon, Registration begins at 11:00 a.m.

**Clubroom:** Closed until further notice

### Sauna Hours:

Wednesday, Saturday, Sunday, 1:00 p.m. to 3:00 p.m. for members 65 years old older at high risk. 3:00 to 9:00 p.m. for all members.

### UPCOMING EVENTS;

*Note: Not all events are listed on this and other DFCSA calendars. If you are planning an event, check availability of the specific facility on a certain date, please call 248-882-4626*

**All newsletter material is due on the 15<sup>th</sup> of the previous month.**



## Unique Finnish DNA Helps Researchers Fight Disease

We live in a fascinating period in the study of genetics and DNA and Finland is contributing to that in an equally fascinating way. We all know Finnish people are quite unique and have many similar ethnic features- blond hair, blue/gray eyes- but that similarity goes much deeper than what we see.

Because Uralic language was less common, and also due to Finland's location, a few bottlenecks occurred where there was relatively severe isolation. Basically, cousins married distant cousins and the gene pool remained the same.

Of course, Intentionally marrying a relative was not encouraged, but in small isolated communities with no new immigration for hundreds, even thousands of years, eventually everyone would be related even if distantly.

I like to look at DNA, genes and alleles like a deck of cards. Most Europeans, and especially Americans carry a deck of - for example- 52 alleles. So, that means each card might represent blond hair, another red and another brown, there might be one for height, weight, build, freckles, dimples, large nose, tanned skin, etc.

Every time a child is born, the deck is shuffled and the child is dealt a hand of 12 cards.

In the U.S. that deck might contain hair color from red to blond with twenty shades and textures. Well, Finns have been dealt a much smaller deck. It is what it is. Their deck usually only contains ash blond hair, and sometimes brown.

Researchers are studying the DNA of Finns and Sami to identify mutations that cause disease and the distinct DNA of Finns make that process a lot easier. In studying Finnish DNA, researchers can focus on 20,000 DNA sequences- instead of the millions they would need to study in Europe. This helps to locate the mutations that cause disease much sooner and easier.

The Finns are very progressive in their willingness to assist, in allowing the examination of remains from ancient burial sites as well as making accessible precise records of families.

We can be proud of our distinct DNA- while accepting that variation can only help give strong building blocks and hopefully weed out mutations that cause things like cancer.

If you're inclined to donate to cancer research, I urge you to consider a Finnish study- as their knowledge will be eagerly shared among the entire medical community. – *Constance York*

References.

<https://www.nature.com/articles/s41586-019-1457-z>

### Free "Classified" Ads

All members are invited to list here any services—for pay or barter—that they would like to advertise, whether it's a service such as handyman or seamstress or pet care or seasonal activities like garage sales. All you have to do is provide the following information: The type of service offered; a description of just what you do as the service provider; your price (hourly rate, job rate, to be negotiated, or whatever); your name; and your contact information (preferred method and times: phone, email, etc.). Total length, including spaces, should not exceed 50 words, not counting the headings. (Overlength copy will be edited for fit.) The deadline is the same as the date for newsletter copy: the 15th of each month.

### Camp For Sale

Camp No. 77 is for sale. It's located on the Westside High End district. No crime, close to attractions, bathrooms, showers, fire pit and lake.

\$3,000 Call 248-672-6185

## Finn Camp Member Publishes First Book



Finn Camp member Glynn Simmons has published a new book. It's available on Amazon, in Paperback and eBook. It's titled Jersey Smith, by Glynn L Simmons.

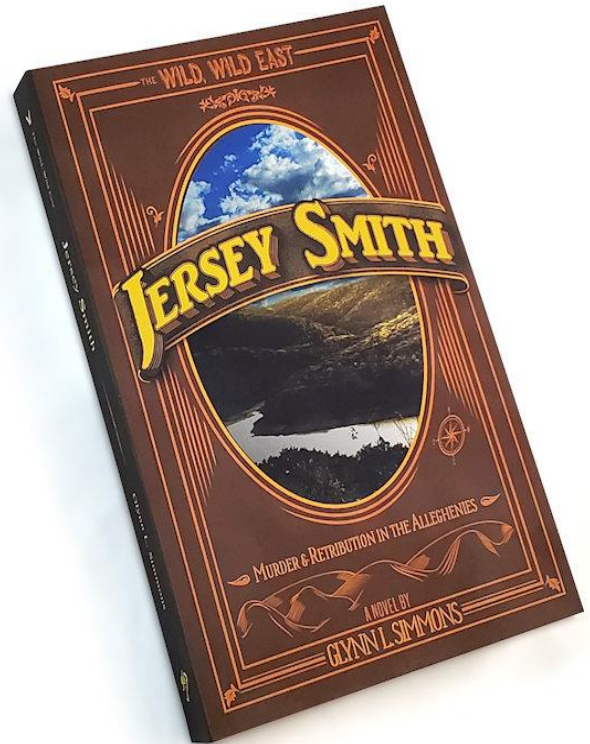
Most of the book was written right here in his, and wife Janene's, Finn Camp.

*A little from the back of the book:*

Unable to catch the killer of everything he held dear, Jersey Smith begins to see the face of the elusive murderer in every outlaw that has the misfortune of crossing his path.

This action/adventure is set in the Allegheny Mountains of 1850. An assortment of likable characters are contrasted by the worst of men. Where danger lurks in the hills, the most dangerous of all is an unstoppable man of good nature and intent. Will Jersey find the man responsible for his loss? Can one man protect everyone he cares about? Will he ever have love, and happiness again?

Glynn Simmons lives in Milford, with his wife of over 40 years, Janene. He's been writing ideas for stories most of his life, only in the last few years has he sat down and put time into his favorites. He has five more books in the final stages. The next out will be the first of four stories set in Northern Michigan of 1956. About a retired Detroit detective that can't seem to stop working. The next in the 'Jersey Smith - Wild, Wild East' series will be out winter of 2020. It's about Jersey's brother James.



### Affinity Promotions

Do you have an upcoming family reunion that you need t-shirts or little gifts? Are you a business that has a trade show coming up and you need booth giveaways or a unique item to hand out to prospective clients? We can help with all of the above and more. Give me a call at 248-640-0481 or visit my website and let me help you with your marketing needs. - Denise Niemasz

### Need a Seamstress?

Call Cindi Maddick for all your alterations, custom work and mending at 248-303-7337



## Kickball Games at Aho Field!



Deidra Larson, our newest board member.



## Leppi Landing Clean Up



## Sisu Sisters Corner

Hei Everyone,  
Hope you all were able to enjoy this incredible summer weather. A BIG thank you to Ellen Rentola & Cindi Maddick for hosting the Christmas in July Sale. With all the generous donation we were able to raise \$358.81 for the Sisu Sisters.

Every year the Nedrow's make the Sisu Sisters dream projects come true. Kiito's Dynamic Duo!

We have been busy around camp. We organized the rental of a hydraulic stump grinder & removal of thirteen decaying stumps. Thanks to the Board, Mike Honka, Ralph & Gage Heikkinen for helping make another dream come true.

We also cleaned & organized the Tractor Garage with the help from Tracey Calnen & Reino Solin.

We wanted to give a special shout out to Brian & Kristy Nedrow for building, staining, installing the beautiful folding down table on the back side of the Men's & Woman's Sauna outside dressing area. The wood was milled from a Finn Camp Oak tree. The tables will last for many years to come if they are kept in upright position when not in use.

The icing on our cake was the Amazing turnout for the Leppi's Landing/Loon Lake Worker Bee Clean UP. We had twenty-eight people pitch in to help clean up our lake front. Thank you to everyone! It takes a village!





Jackson Pye helping out at the Leppi Landing clean up day.



## BOARD NOTES AND REMINDERS

Boats cannot be tied to the fishing dock at Loon Lake.

Campfires at individual camps must be monitored and completely extinguished when not in use.

The Board would like to remind all members that the use of heavy equipment must only be done with approval of the mechanical committee. If you have any questions please contact Kevin Mack. Members with suggestions, comments or board-related business are asked to e-mail [board@finncamp.org](mailto:board@finncamp.org). General questions may be answered by visiting [www.finncamp.org](http://www.finncamp.org)

**Attention all committees:** The Board would like for you to communicate with us regarding projects and fundraisers you are planning. We would like to support your endeavors and projects and would like to make sure that multiple committees are not planning on tackling the same area to prevent overlapping, or we can connect those committees so they can work together. [www.finncamp.org](http://www.finncamp.org).

## Finn Camp Store



Come shop at the Finn Camp store. Lots of new tee shirts, mugs, hats and back packs. For access to the store during off hours, call Patti Leppi, Ph: 248-921-1432, or email, [Store@finncamp.org](mailto:Store@finncamp.org).

## Automotive Repair

If you are looking for a great mechanic and want a fair price look no more. I am a certified automotive technician. If you are in need of light auto repairs please give me a call!

Rob Zewatsky 248-877-0601  
Estimates will be provided with every request!

## Cords of Firewood For sale

\$55 for members. Delivery is extra. Call or text Mike Honka at 248-860-5109 to schedule loading and pick up. Please do not help yourself to the firewood.

According to Blue Book Rule 203.1.3: Animals are not permitted on the grounds unless properly leashed.

New work hour cards are now located at the sauna building and the clubroom.

There has been a large increase with non-members riding bikes, walking their dogs and running through Finn Camp. If you see people who do not look familiar please address them politely and ask them to leave.

Trash Rules: Dumpsters are for members use only! Do not put in large or long items that may wedge or jam the dumpster when being tipped into the garbage truck. No major dumping on festival weekends. No overfilling. No furniture, propane tanks, wood, construction materials or other large items are to be left in, by or around the dumpster. Large items can be placed at roadside near the tractor garage on Tuesdays for Wednesday pickup. Finn Camp or member construction materials can be placed in the dumpster by the pole barn.

The Finn Camp has a member's only group on Facebook. If you are not a member of the group and would like to be added contact Linda Gooden at [gooden\\_71@hotmail.com](mailto:gooden_71@hotmail.com) with your email address and she will add you to the group. This group will include private members only events. Work projects can be another form of communication to our members.

You can now pay your Finn Camp bill online with PayPal by using [treasurer@finncamp.org](mailto:treasurer@finncamp.org). You must select "Transfer to friends & family" and pay directly from your PayPal or bank account to avoid a fee. All fees incurred by Finn Camp will be charged to that member's account. Fees will be charged if paying with a credit card or selecting "transfer for goods or services."

The camp social director is Joni Sennhenn. Please contact Joni at 248-882-4626 to make a reservations for the beach and sauna area, the *Kenttä*, Dance Hall or Clubroom. Note: There is no rental fee for committee sponsored events. You will need to go through the social director however to ensure the venue is available.

## **BOARD AND COMMITTEE MEETINGS**

### **Board of Directors**

Wednesday, September 23, 5:00 p.m., visitors at 5:00 p.m.

### **Future Planning**

Wednesday, September 2, 7:00 p.m., boardroom

### **Finn Camp Newsletter**

(ISSN 2154-5545) is published the first of each month by the Detroit Finnish Cooperative Summer Camp Association (D.F.C.S.C.A.), 2524 Loon Lake Rd., Wixom, MI 48393-1654. Contents copyright © 2020 D.F.C.S.C.A. All rights reserved. Reproduction of this publication in whole or in part, in any form, is forbidden without prior written permission.

### **Board of Directors**

President: Brad O'Neill  
Vice President: Deidra Larsen  
Treasurer: Amber Martin  
Secretary: Leah Paukovits  
Works Administrators: Chris Nordin, Kevin Homola, Mike Niemasz

**Editorial Staff:** Newsletter Committee chairperson, production, Brian Peltó; Designer, photographer and website manager, Erick Leskinen; Graphics, Glynn Simmons; Contributors, Belinda Arbogast, Mary Burck, Naomi Petainen.

**Subscriptions:** Printed newsletters by regular mail are \$25 per year. Subscriptions by email are free. To receive newsletters via email (the only version in color) go to [newsletter\\_editor@finncamp.org](mailto:newsletter_editor@finncamp.org) and write "Subscribe to Newsletters" in the subject field.

**All material for newsletter articles is due by the 15<sup>th</sup> of the month.** Please visit the Finn Camp website at [www.finncamp.org](http://www.finncamp.org).